

**LPLAVSF | LPLAESF – DRUVA®PUR LINE REGULATOR**

LINE REGULATOR | PURE LINE (BRASS CHROME PLATED) | 20m³ SERIES | ABSOLUT PRESSURE RANGE  
SINGLE STAGE | 4-PORT VERSION



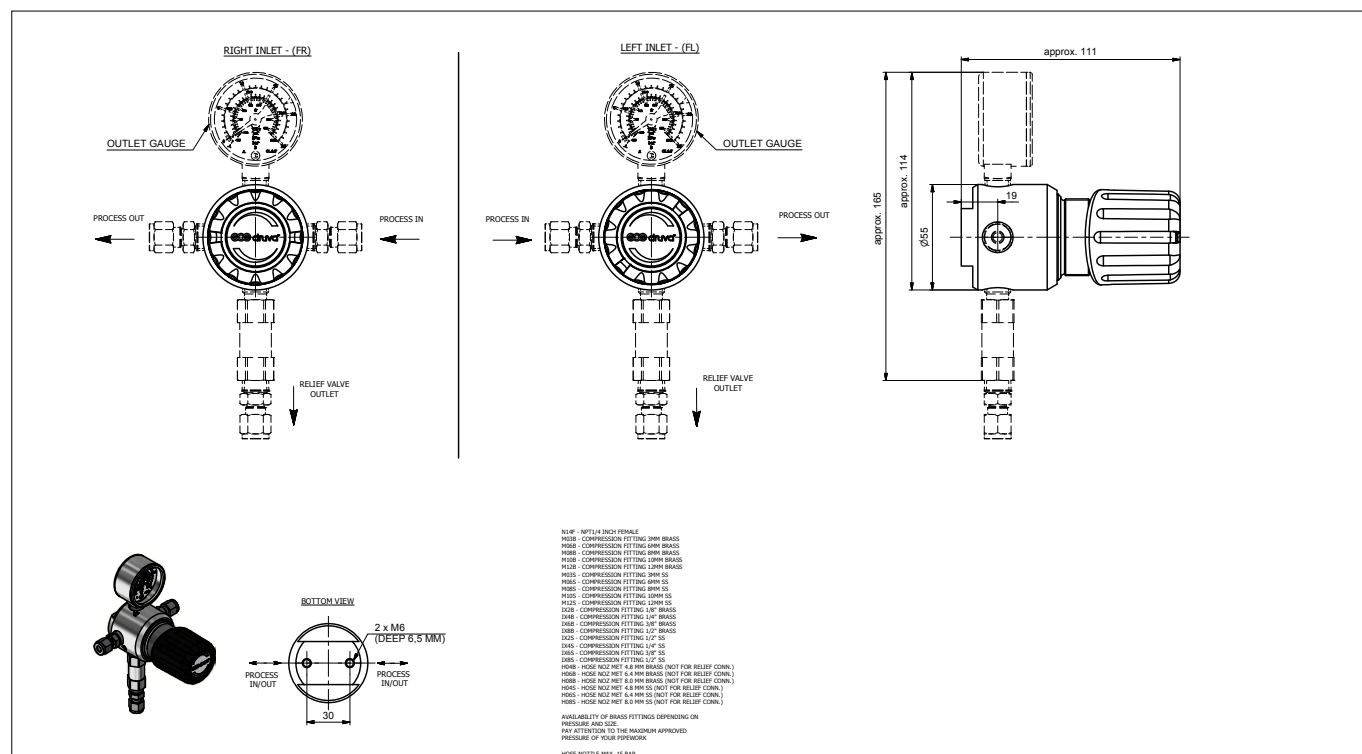
This single-stage line pressure regulator is used in gas supply systems for pure, inert, flammable, oxidising gases and gas mixtures up to gas purity 6.0. It is not usable for corrosive and / or toxic gases and their mixtures.

**SPECIAL FEATURES:**

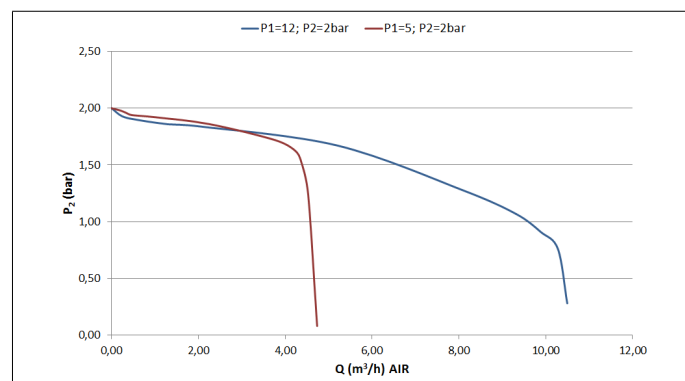
- > Hastelloy diaphragm tightening system to atmosphere
- > Compact design
- > Excellent pressure adjustment
- > Designed and approved regarding ISO 7291
- > Relief valve in delivery pressure side available
- > Electrostatic chargeability test
  - Fulfills requirements according to ISO 80079-36; IEC TS 60079-32-1 and German TRGS 727
  - Usable in EX- areas zones 1 and 2 for gases with explosion risk group I; IIA; IIB; IIC

TECHNICAL DATA	
<b>Working temperature:</b>	-20 °C to +60 °C
<b>Inlet / outlet ports:</b>	See technical drawing
<b>Leakage rate seat:</b>	<5x10 <sup>-6</sup> mbar l/s (Helium)
<b>Leakage rate outside:</b>	<1x10 <sup>-9</sup> mbar l/s (Helium)
<b>Filter:</b>	1x for inlet 1x for each outlet
<b>Weight:</b>	1,28 kg
<b>Flow nominal:</b>	3 m³/h (N₂)
<b>Material gas wetted parts:</b>	
<b>Regulator body:</b>	Brass chrome plated
<b>Regulator diaphragm:</b>	Hastelloy
<b>Regulator seat:</b>	LPLAVSF-Version FKM LPLAESF-Version EPDM
<b>Relief valve seat:</b>	LPLAVSF-Version FKM LPLAESF-Version EPDM
<b>Regulator poppet:</b>	Brass
<b>Pressure rates line regulator:</b>	
<b>Max. inlet pressure</b>	12 bar
<b>Delivery pressure</b>	2 bar abs/ 3 bar abs
<b>Pressure gauges rates (pressure rates):</b>	-1 bar till 1,5 bar (2 bar abs)/ -1 till 5 bar (3 bar abs)
<b>Contact gauges available – please contact us</b>	
<b>Cracking pressure relief valves:</b>	1,5 bar (2 bar abs)/ 3,1 bar (3 bar abs)
<b>Test in production:</b>	Pressure test with Helium of each item
	Seat leakage test with Helium of each item
	Helium leak test of each regulator against atmosphere
	Test of functionality of each item
<b>Approvals during development:</b>	Type test in accordance with ISO 7291
	Additional life cycle test
	Electrostatic chargeability test
	<ul style="list-style-type: none"> <li>• Fulfill requirements according ISO 80079-36; IEC TS 60079-32-1 and German TRGS 727</li> <li>• Usable in EX-areas zones 1 and 2 for gases with explosion risk group I; IIA; IIB; IIC</li> </ul>

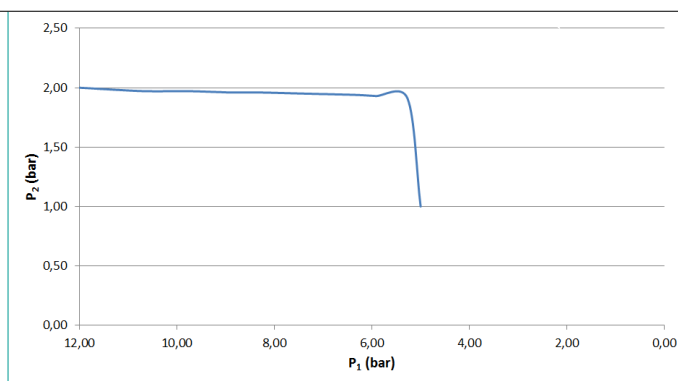
### TECHNICAL DRAWING:



## FLOW CURVES:



### DYNAMIC EXPANSION CURVES:



## ORDER CODE:

Example Line Regulator | PUR Linie | Brass Chrome Plated | Low Flow | Absolute Pressure | Single Stage | 4-Port Version

[illegible]

Order code (as described above) without special characters or spaces! Complete Order Code **LPLAVSFRD1AX00BTN14FN14F000001**

